

| no.                                       | room                       | sq.m.  |
|---|----------------------------|--------|
| 1   | foyer                      | 6.77   |
| 2   | garage                     | 22.29  |
| 3   | toilet                     | 2.61   |
| 4   | living room with a kitchen | 38.13  |
| 5   | tech. room                 | 6.71   |
| useable area of the 1 <sup>st</sup> floor |                            | 82.30  |
| terrace                                   |                            | 12.00  |
| total useable area of the house           |                            | 131.69 |
| total floor area of the house             |                            | 140.03 |

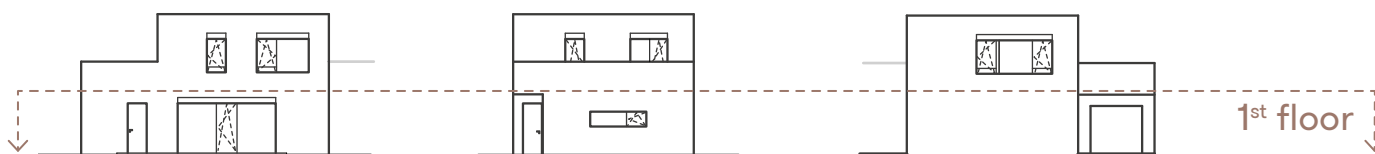
[www.domynapramenech.cz](http://www.domynapramenech.cz)

Developer  
bpd development

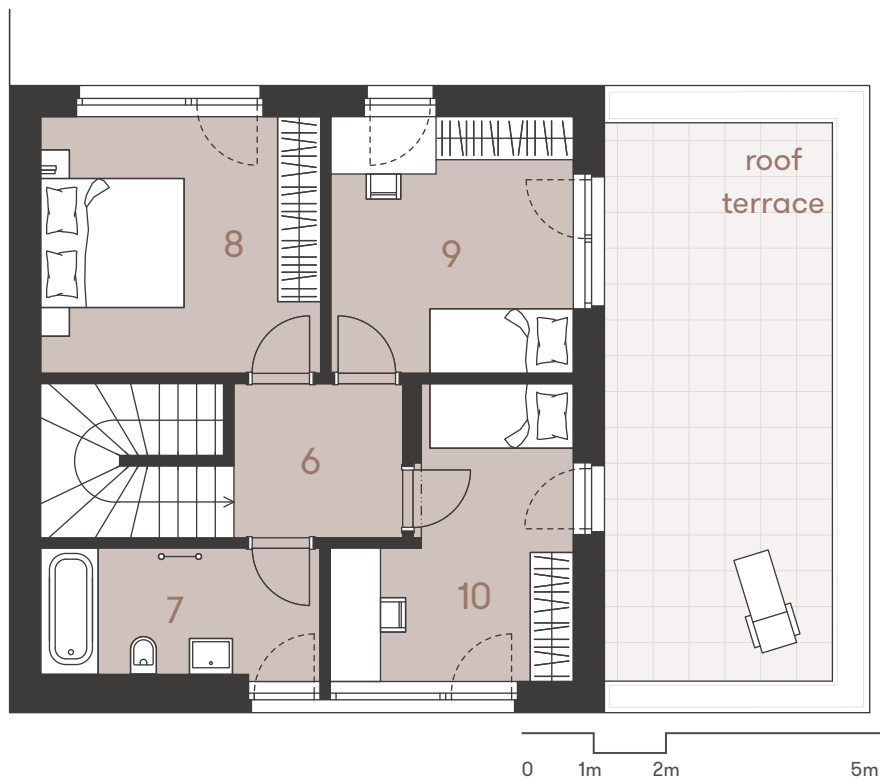
Exclusive agent

svoboda&williams | CHRISTIE'S  
INTERNATIONAL REAL ESTATE

Na Perštýně 2, 110 00 Praha 1  
+420 257 328 281, +420 257 322 032  
info@svoboda-williams.com



The diagram of the house's floor plan shows its interior layout. The kitchen and furniture are not included, but are shown purely for illustrative purposes. The description of the structure, surfaces, and range of equipment is part of the "Property Standards" appendix. The developer reserves the right to change and/or specify without prior notice.



| no.                                       | room               | sq.m.  |
|---|--------------------|--------|
| 6   | hallway and stairs | 10.85  |
| 7   | bathroom           | 6.96   |
| 8   | bedroom            | 13.98  |
| 9   | bedroom            | 12.10  |
| 10  | bedroom            | 11.29  |
| useable area of the 2 <sup>nd</sup> floor |                    | 49.39  |
| roof terrace                              |                    | 24.90  |
| total useable area of the house           |                    | 131.69 |
| total floor area of the house             |                    | 140.03 |

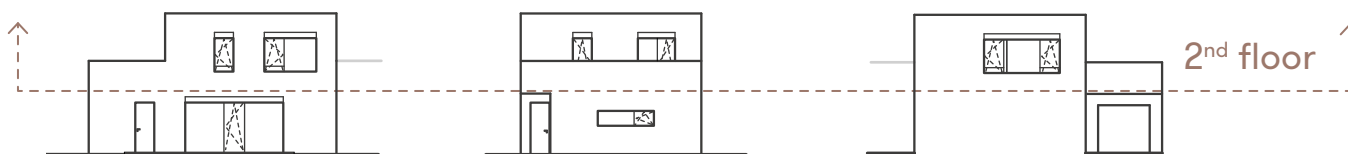
[www.domynapramenech.cz](http://www.domynapramenech.cz)

Developer  
bpd development

Exclusive agent

svoboda&williams | CHRISTIE'S  
INTERNATIONAL REAL ESTATE

Na Perštýně 2, 110 00 Praha 1  
+420 257 328 281, +420 257 322 032  
[info@svoboda-williams.com](mailto:info@svoboda-williams.com)



The diagram of the house's floor plan shows its interior layout. The kitchen and furniture are not included, but are shown purely for illustrative purposes. The description of the structure, surfaces, and range of equipment is part of the "Property Standards" appendix. The developer reserves the right to change and/or specify without prior notice.



| area                          | sq.m.         |
|-------------------------------|---------------|
| built-up area of the house    | 99.70         |
| garden                        | 213.30        |
| <b>total area of the land</b> | <b>313.00</b> |

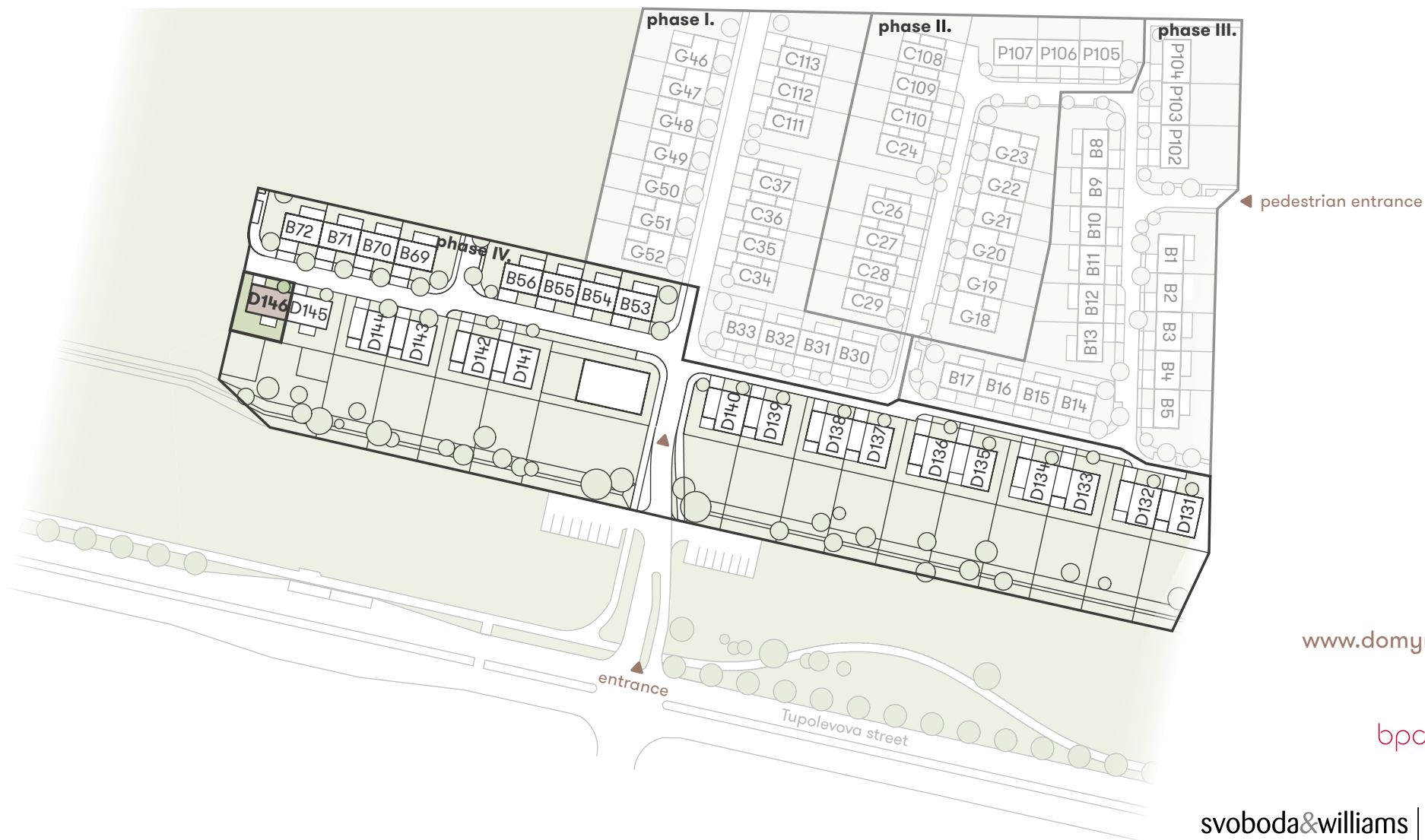
- Ⓐ pillar for both electricity and gas meter
- plot border
- - - land encumbered by easement - sold separately

[www.domynapramenech.cz](http://www.domynapramenech.cz)

Developer  
bpd development

Exclusive agent  
svoboda&williams | CHRISTIE'S  
INTERNATIONAL REAL ESTATE

Na Perštýně 2, 110 00 Praha 1  
+420 257 328 281, +420 257 322 032  
[info@svoboda-williams.com](mailto:info@svoboda-williams.com)



[www.domynapramenech.cz](http://www.domynapramenech.cz)

Developer  
bpd development

Exclusive agent  
svoboda&williams | CHRISTIE'S  
INTERNATIONAL REAL ESTATE

Na Perštýně 2, 110 00 Praha 1  
+420 257 328 281, +420 257 322 032  
[info@svoboda-williams.com](mailto:info@svoboda-williams.com)

## Overall Situation